

Part #
850-001
850-002
850-003

Part #
850-004
850-005
860-006

This Drawing and the Knowledge and Information contained herein, is the Exclusive Property of McVac Manufacturing, Inc. It is furnished with the understanding that the information contained is Confidential and Proprietary, and should be treated as such. No Un-authorized reproduction of this Document is permitted without the written consent of McVac Manufacturing, Inc.

1" Bolt With Male VCR Fittings both sides
Part #850-001

McVac manufacturing, Inc.

Title: 1" Bolt-male VCR
All surfaces Date: _____ Scale: _____
Break all corners
Tolerance: XX ±.010 Sheet Dwg: 1 of 1 850-001
XXX ±.005

1	Preliminary			
Rev	Description	ECN	Date	

This Drawing and the Knowledge and Information contained herein, is the Exclusive Property of McVac Manufacturing, Inc. It is furnished with the understanding that the information contained is Confidential and Proprietary, and should be treated as such. No Un-authorized reproduction of this Document is permitted without the written consent of McVac Manufacturing, Inc.

NW 25 Flange With 1/4" Male VCR Fittings Both Sides
Part #850-004

McVac manufacturing, Inc.

Title: NW-25 Flange
All surfaces Date: _____ Scale: _____
Break all corners
Tolerance: XX ±.010 Sheet Dwg: 1 of 1 850-004
XXX ±.005

1	Preliminary			
Rev	Description	ECN	Date	

This Drawing and the Knowledge and Information contained herein, is the Exclusive Property of McVac Manufacturing, Inc. It is furnished with the understanding that the information contained is Confidential and Proprietary, and should be treated as such. No Un-authorized reproduction of this Document is permitted without the written consent of McVac Manufacturing, Inc.

2 3/4" CF Flange with 1/4" Male VCR Fittings Both Sides
Part #850-002

McVac manufacturing, Inc.

Title: 2 3/4" Conflat Flange
All surfaces Date: _____ Scale: _____
Break all corners
Tolerance: XX ±.010 Sheet Dwg: 1 of 1 850-002
XXX ±.005

1	Preliminary			
Rev	Description	ECN	Date	

This Drawing and the Knowledge and Information contained herein, is the Exclusive Property of McVac Manufacturing, Inc. It is furnished with the understanding that the information contained is Confidential and Proprietary, and should be treated as such. No Un-authorized reproduction of this Document is permitted without the written consent of McVac Manufacturing, Inc.

2 3/4" CF Flange with 2 1/4" Male VCR Fittings Both Sides
Part #850-005

McVac manufacturing, Inc.

Title: 2 3/4" Conflat Flange
All surfaces Date: _____ Scale: _____
Break all corners
Tolerance: XX ±.010 Sheet Dwg: 1 of 1 850-005
XXX ±.005

1	Preliminary			
Rev	Description	ECN	Date	

This Drawing and the Knowledge and Information contained herein, is the Exclusive Property of McVac Manufacturing, Inc. It is furnished with the understanding that the information contained is Confidential and Proprietary, and should be treated as such. No Un-authorized reproduction of this Document is permitted without the written consent of McVac Manufacturing, Inc.

NW 40 Flange With 1/4" Male VCR Fittings both sides
Part #850-003

McVac manufacturing, Inc.

Title: NW-40 Flange
All surfaces Date: _____ Scale: _____
Break all corners
Tolerance: XX ±.010 Sheet Dwg: 1 of 1 850-003
XXX ±.005

1	Preliminary			
Rev	Description	ECN	Date	

This Drawing and the Knowledge and Information contained herein, is the Exclusive Property of McVac Manufacturing, Inc. It is furnished with the understanding that the information contained is Confidential and Proprietary, and should be treated as such. No Un-authorized reproduction of this Document is permitted without the written consent of McVac Manufacturing, Inc.

2 3/4" CF Flange with 2 1/4" Male VCR Fittings Both Sides
Part #850-006

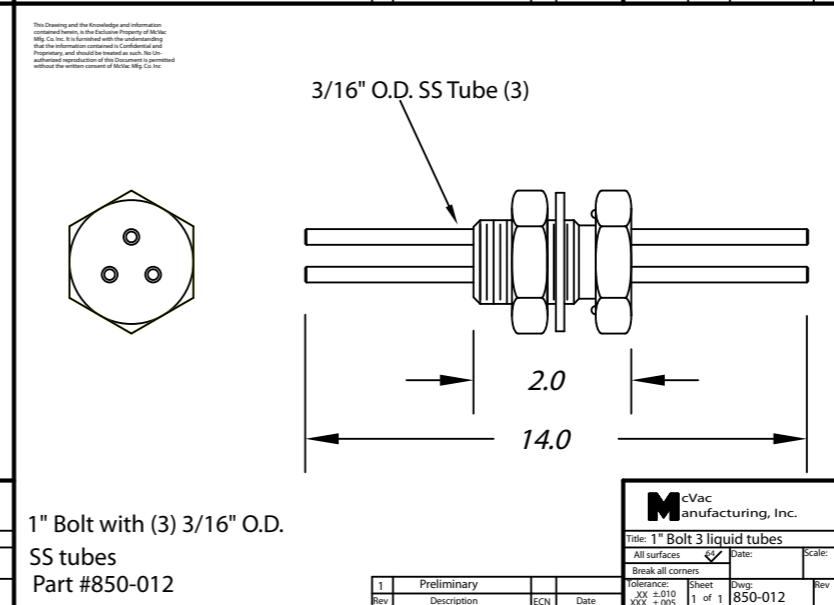
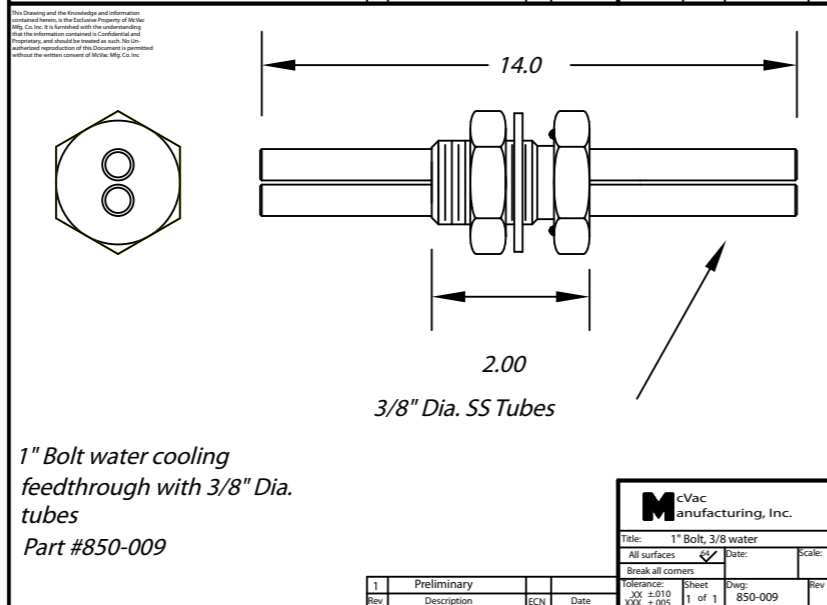
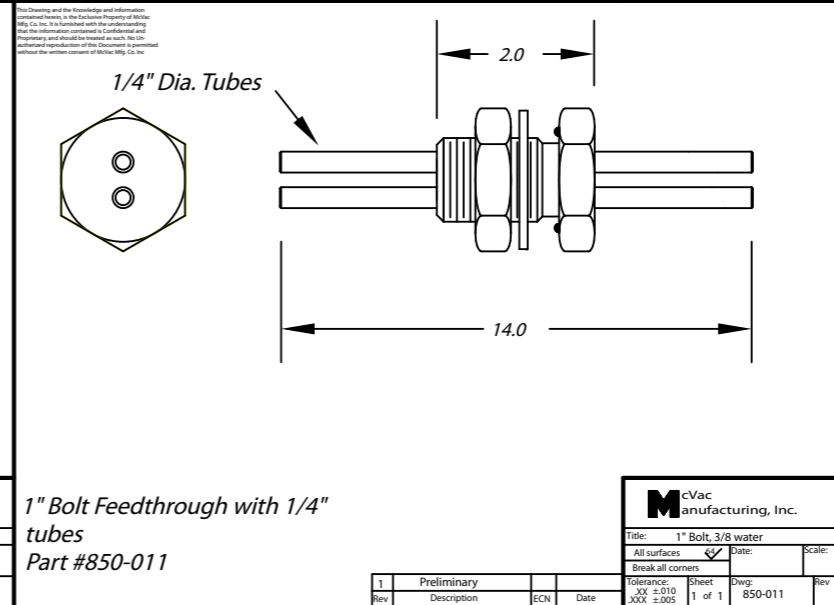
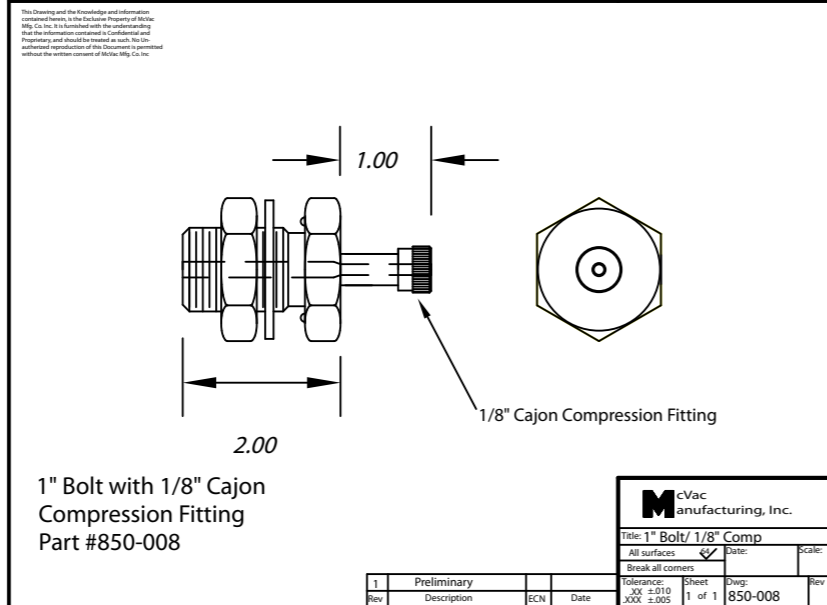
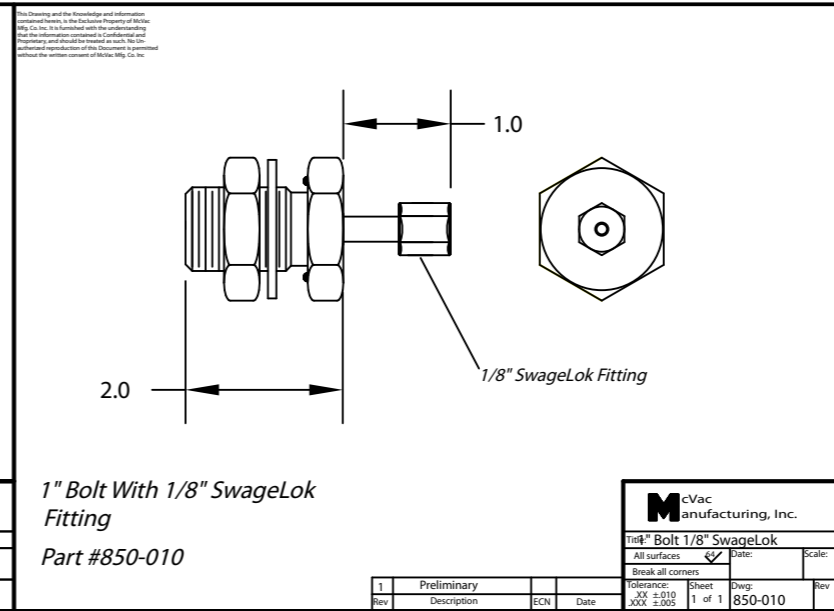
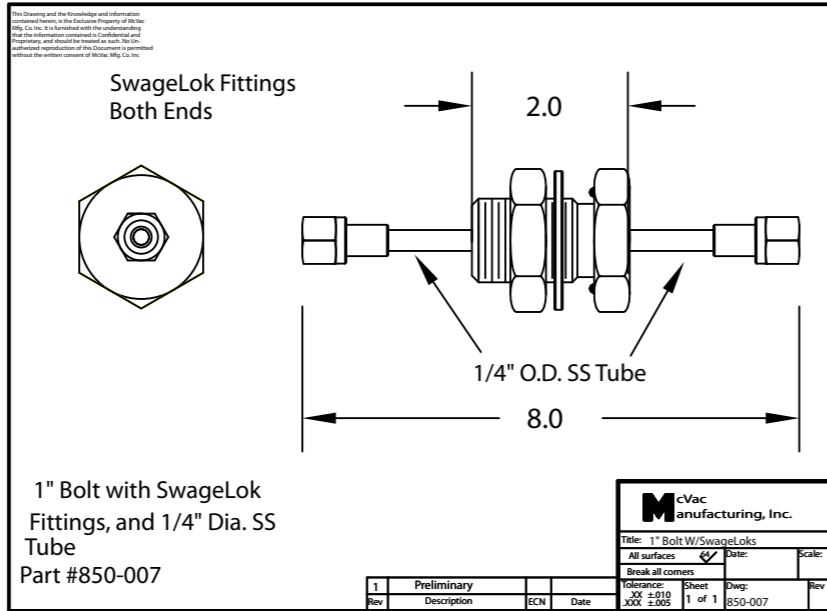
McVac manufacturing, Inc.

Title: NW-40 Feedthrough
All surfaces Date: _____ Scale: _____
Break all corners
Tolerance: XX ±.010 Sheet Dwg: 1 of 1 850-006
XXX ±.005

1	Preliminary			
Rev	Description	ECN	Date	

Part #
850-007
850-008
850-009

Part#
850-010
850-011
850-012



Part #
850-014
850-016
850-017

Part #
850-018
850-019
850-020

