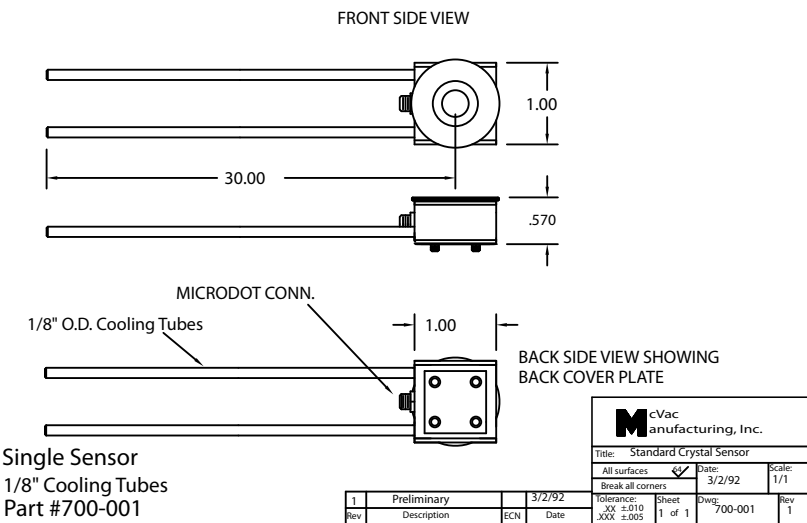


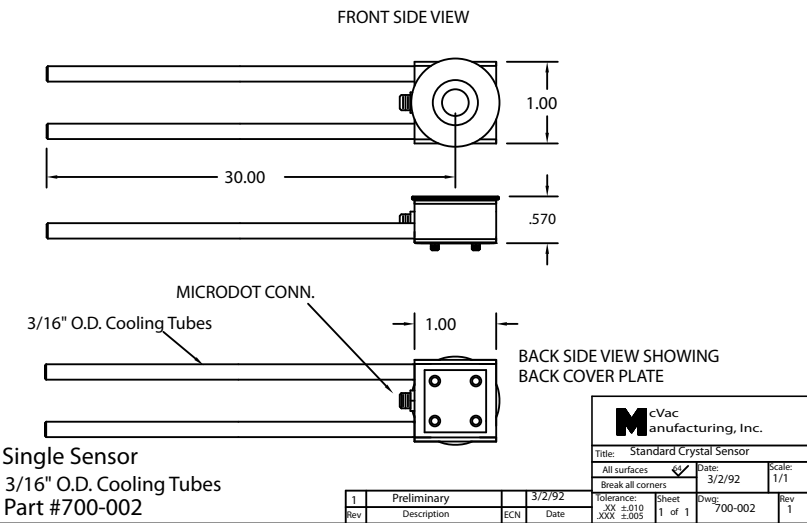
Part #
700-001
700-002
700-003

Part #
700-009
700-010
700-011

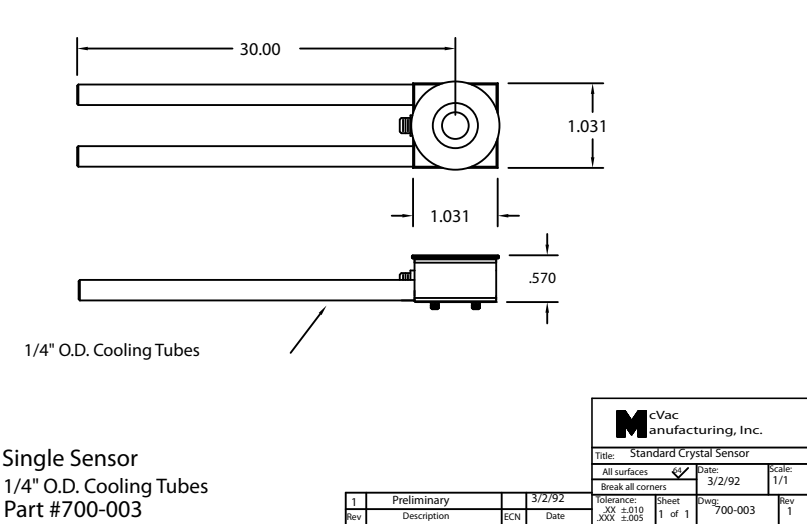
This Drawing and the Knowledge and Information contained herein, is the Exclusive Property of McVac Mfg. Co. Inc. It is furnished with the understanding that the information contained is Confidential and Proprietary, and should be treated as such. No Un-authorized reproduction of this Document is permitted without the written consent of McVac Mfg. Co. Inc.



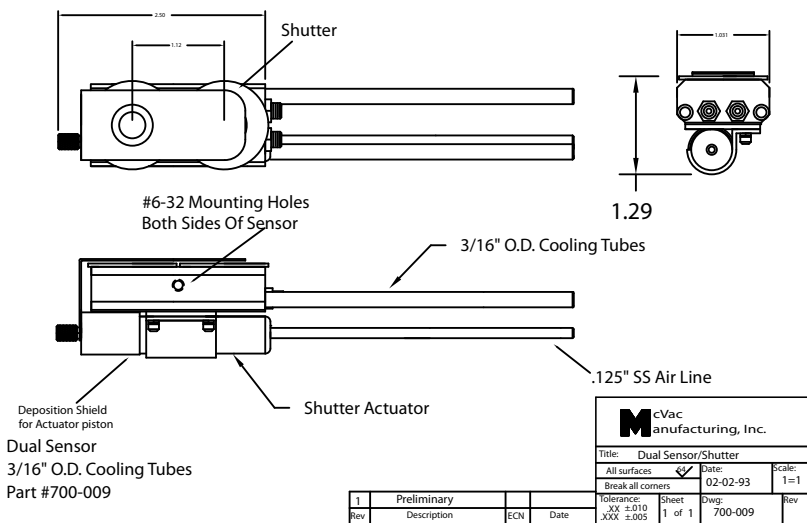
This Drawing and the Knowledge and Information contained herein, is the Exclusive Property of McVac Mfg. Co. Inc. It is furnished with the understanding that the information contained is Confidential and Proprietary, and should be treated as such. No Un-authorized reproduction of this Document is permitted without the written consent of McVac Mfg. Co. Inc.



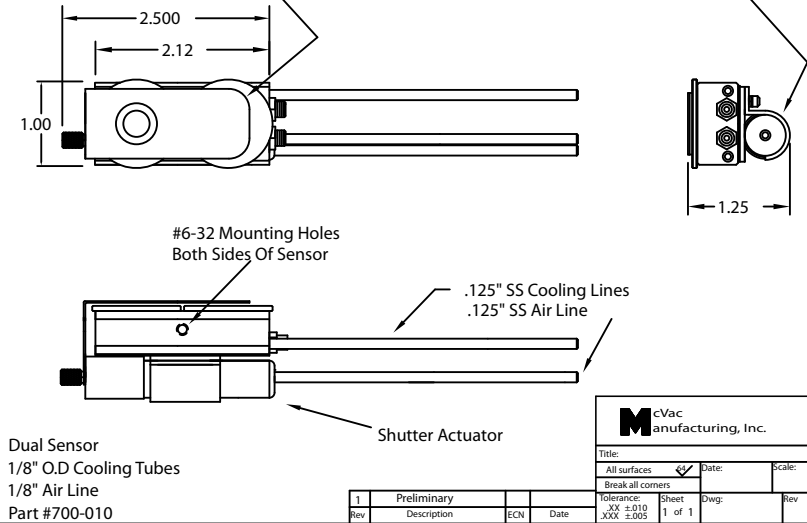
This Drawing and the Knowledge and Information contained herein, is the Exclusive Property of McVac Mfg. Co. Inc. It is furnished with the understanding that the information contained is Confidential and Proprietary, and should be treated as such. No Un-authorized reproduction of this Document is permitted without the written consent of McVac Mfg. Co. Inc.



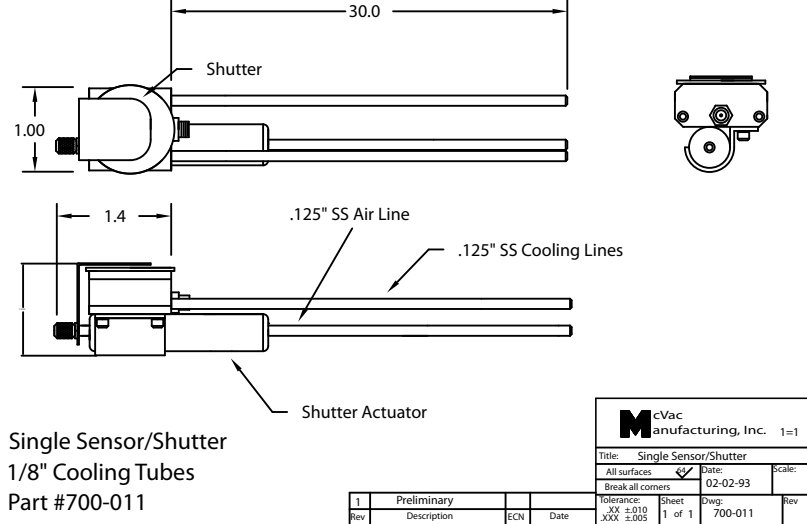
This Drawing and the Knowledge and Information contained herein, is the Exclusive Property of McVac Mfg. Co. Inc. It is furnished with the understanding that the information contained is Confidential and Proprietary, and should be treated as such. No Un-authorized reproduction of this Document is permitted without the written consent of McVac Mfg. Co. Inc.



This Drawing and the Knowledge and Information contained herein, is the Exclusive Property of McVac Mfg. Co. Inc. It is furnished with the understanding that the information contained is Confidential and Proprietary, and should be treated as such. No Un-authorized reproduction of this Document is permitted without the written consent of McVac Mfg. Co. Inc.

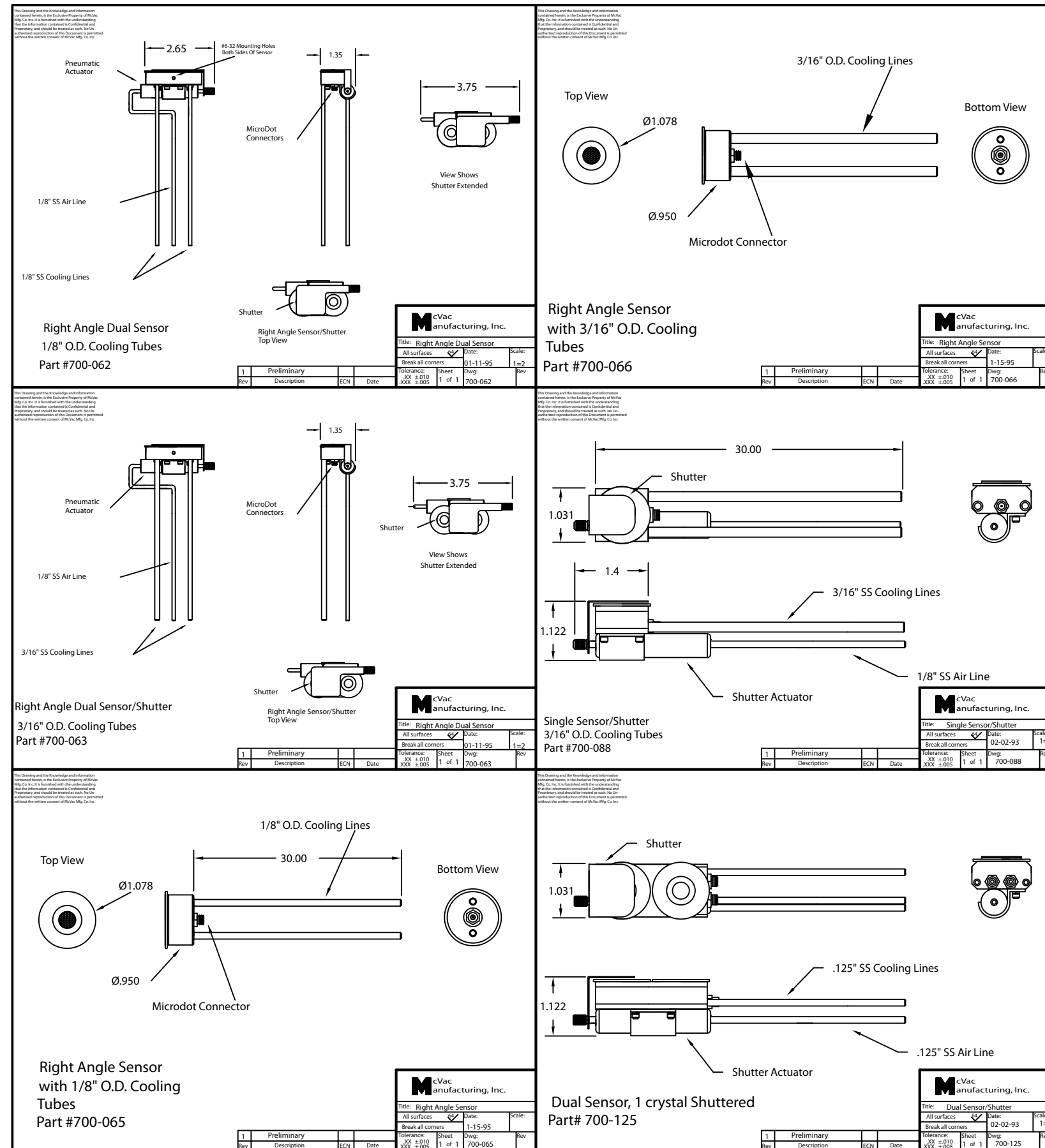


This Drawing and the Knowledge and Information contained herein, is the Exclusive Property of McVac Mfg. Co. Inc. It is furnished with the understanding that the information contained is Confidential and Proprietary, and should be treated as such. No Un-authorized reproduction of this Document is permitted without the written consent of McVac Mfg. Co. Inc.



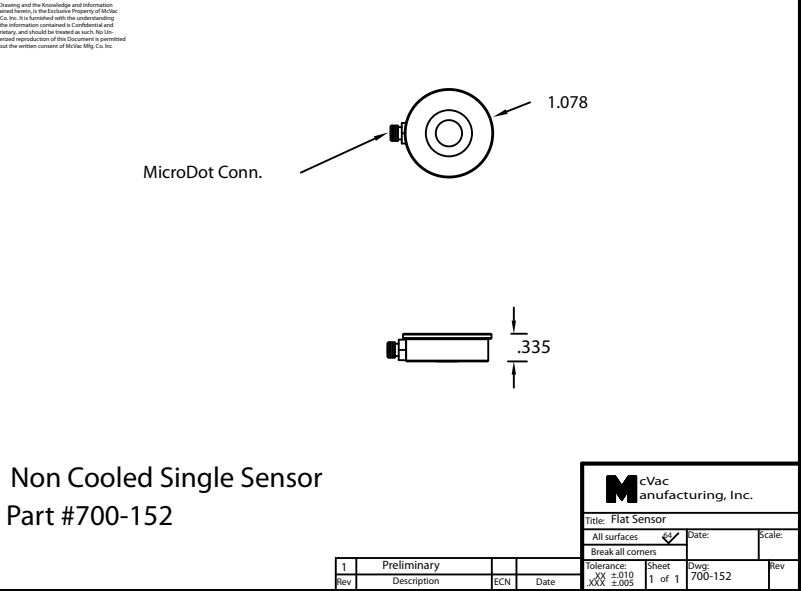
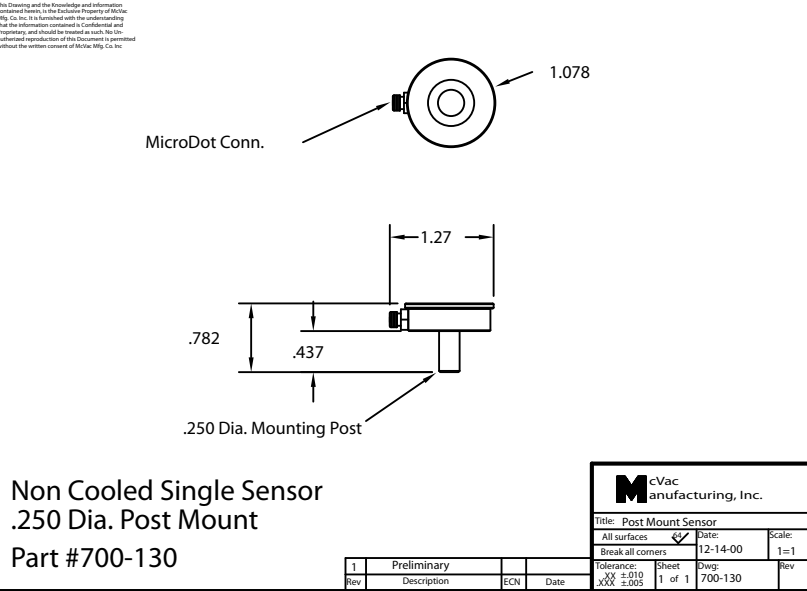
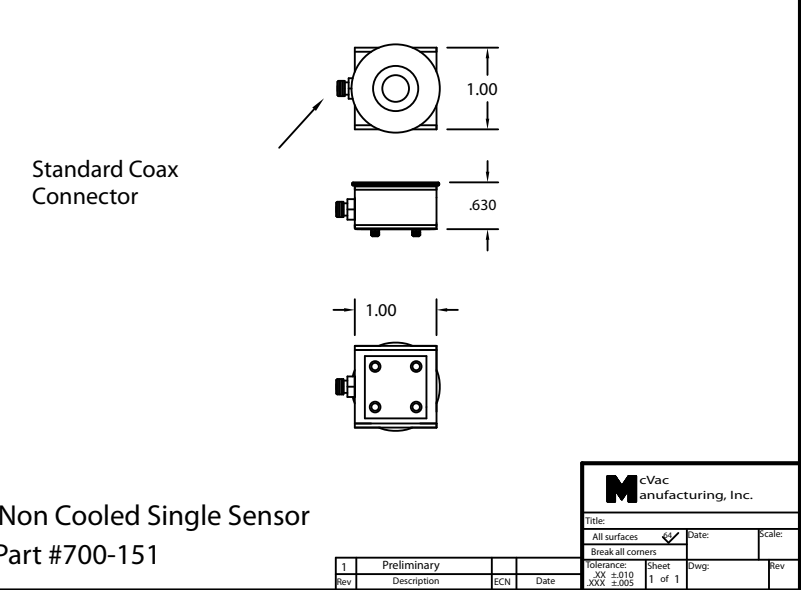
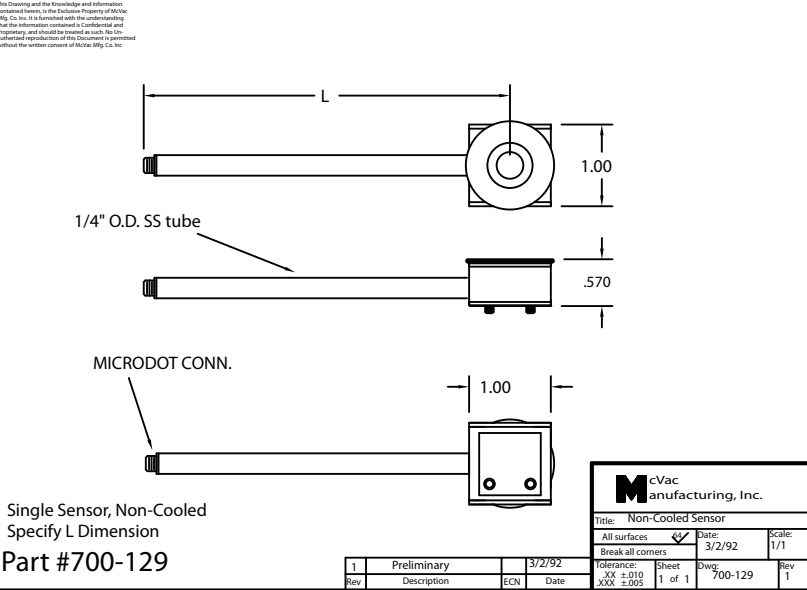
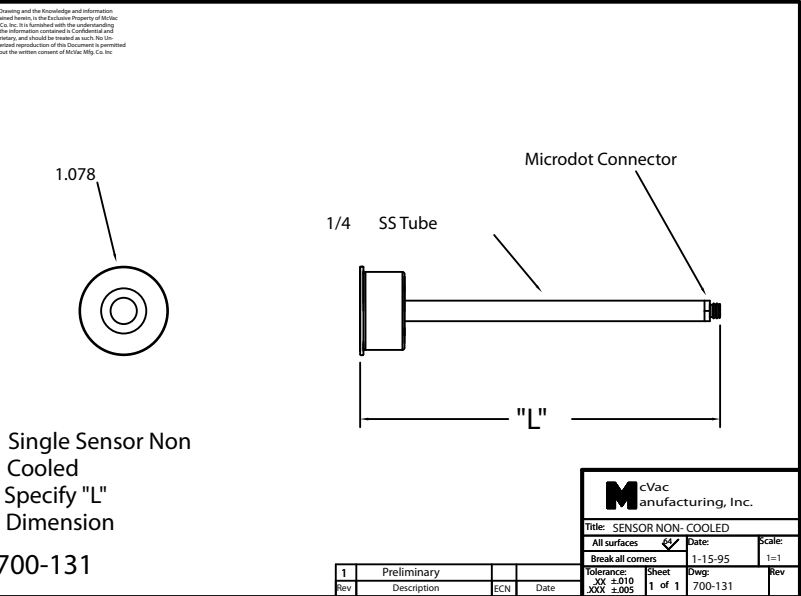
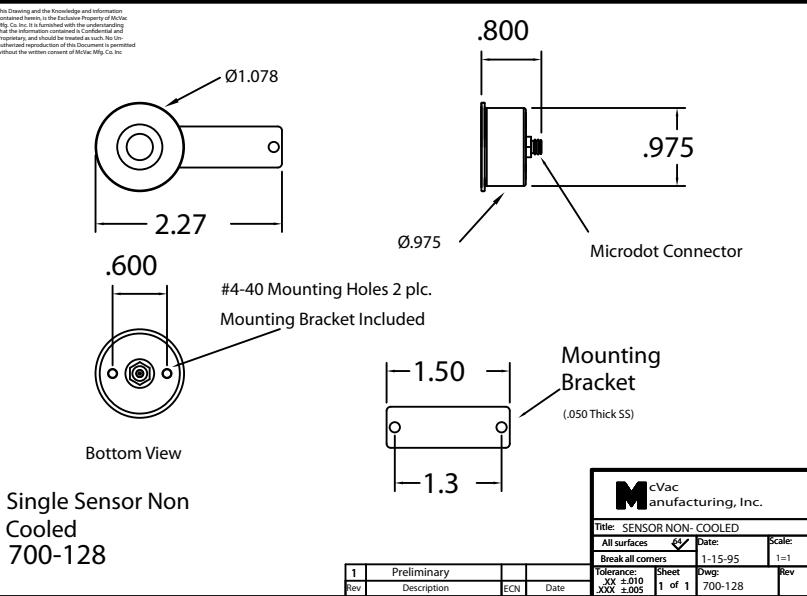
Part #
700-062
700-063
700-065

Part #
700-066
700-088
700-125



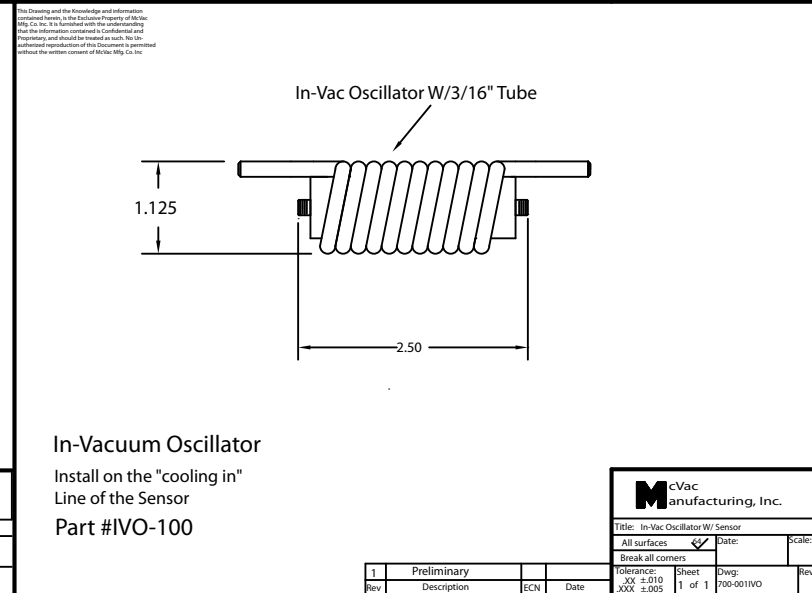
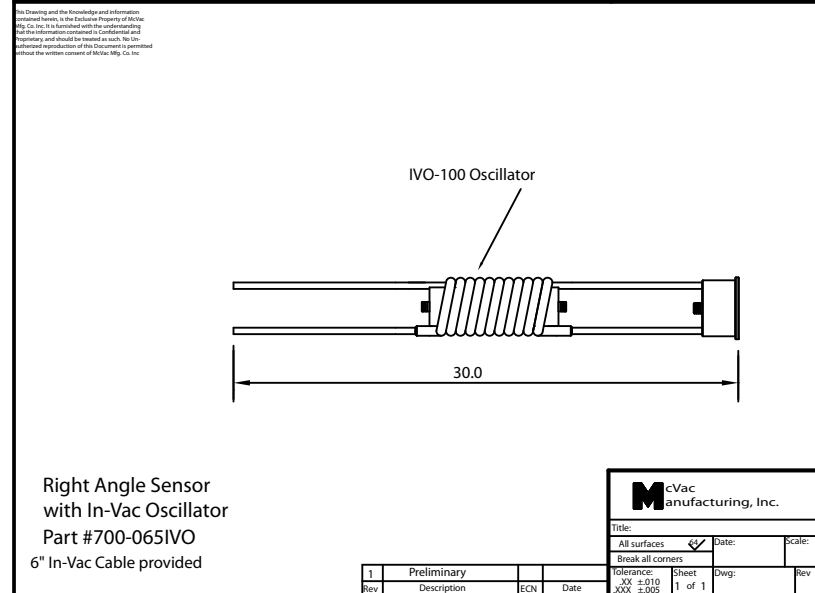
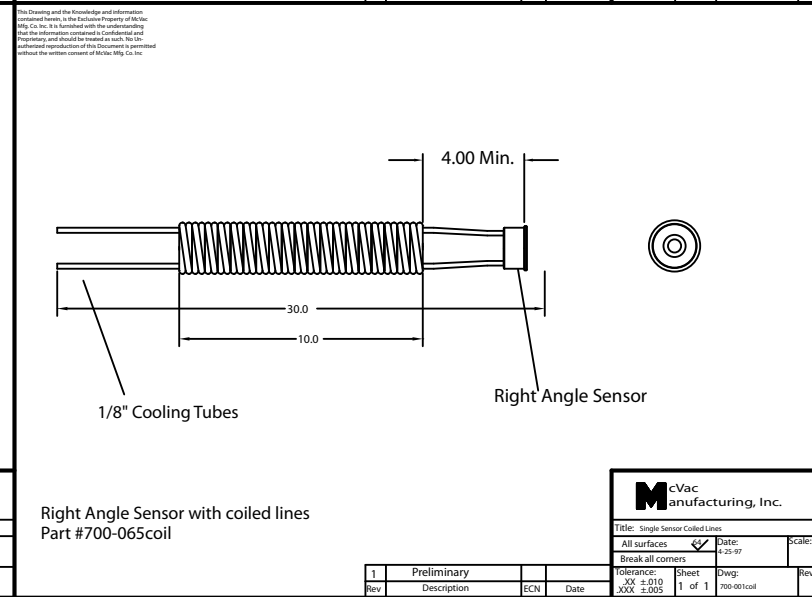
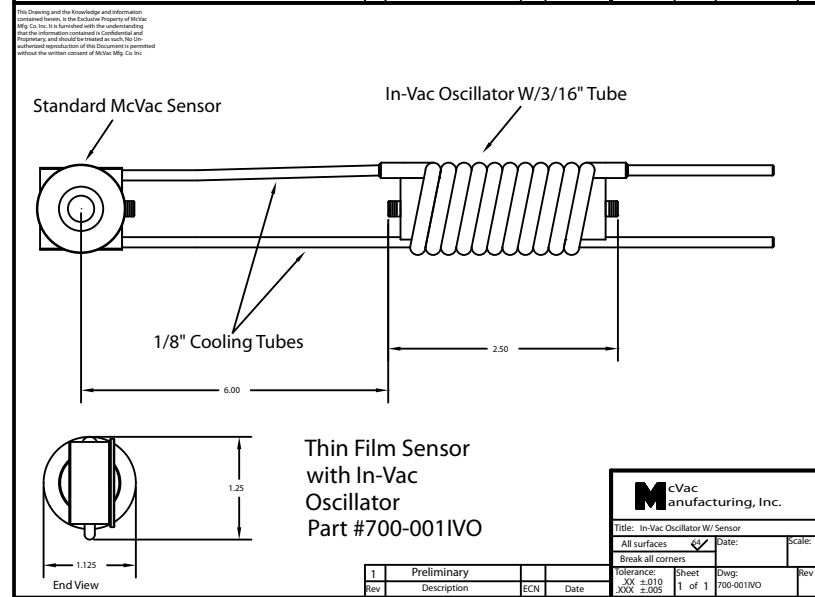
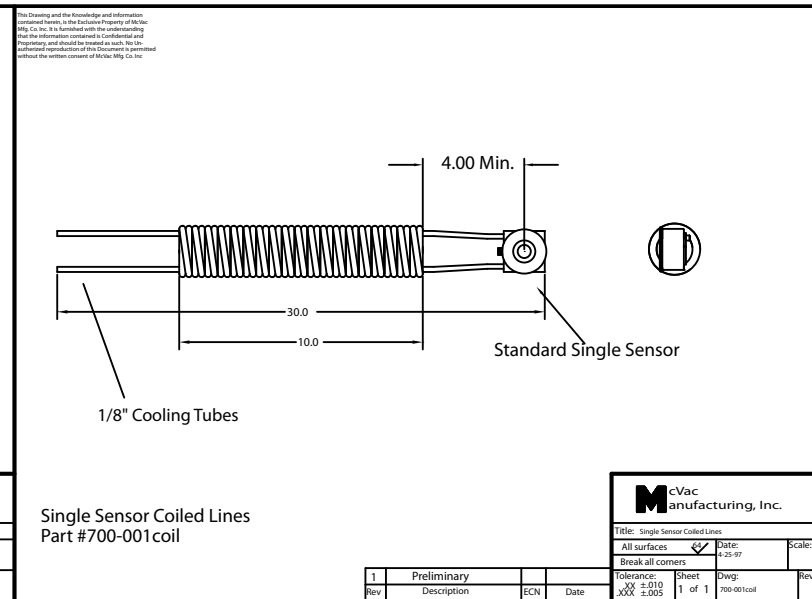
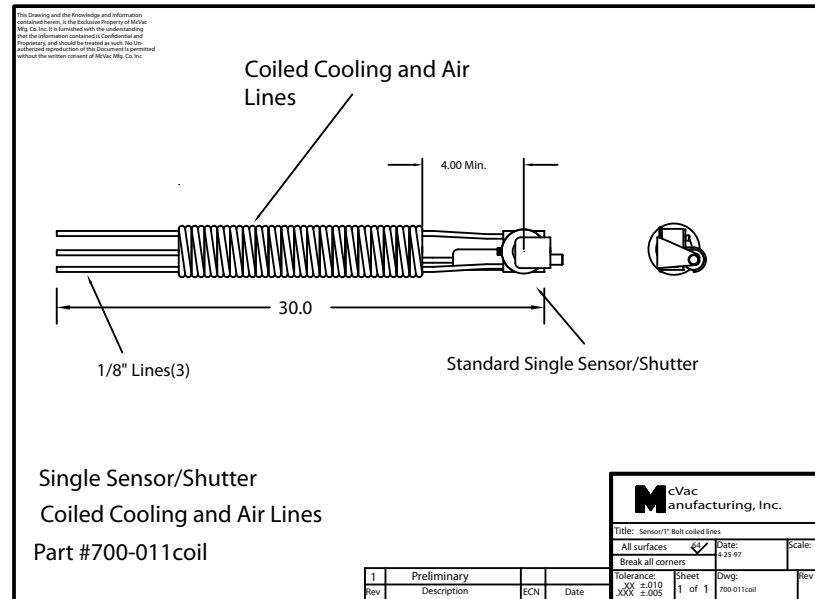
Part #
700-128
700-129
700-130

Part #
700-131
700-151
700-152



Part #
700-011Coiled
700-001IVO
700-065IVO

Part #
700-001Coil
700-065Coil
IVO-100



Dual Sensor Parts List
Single Sensor Parts List

Part #
700-067 Rebuild Kit

View showing all parts assembled

712-021 Dual Sensor shutter Kit

Parts List

1.Sensor Body
2.Back Plate
3.Spacer
4.Pneumatic Actuator
5.Actuator Bracket
6.Lock Washer
7.SHCS 4-40
8.Shutter
9.Shutter Screw
10.Lock Washer
11.Deposition Shield

Kit #712-021 includes all parts shown ,except #1 and #4

| 1 | Preliminary | | |
|-----|-------------|-----|------|
| Rev | Description | ECN | Date |
| | | | |

McVac
Manufacturing, Inc.

Title:

| | | | |
|-------------------------|--------|-------|--------|
| All surfaces | ✓ | Date: | Scale: |
| Break all corners | | | |
| Tolerance: | Sheet | Dwg: | Rev |
| .XX ±.010 .XXX ±.005 | 1 of 1 | | |

This Drawing and the Knowledge and information contained herein, is the Exclusive Property of McVac Mfg. Co. Inc. It is furnished with the understanding that the information contained is Confidential and Proprietary and should be treated as such. No Un-authorized reproduction of this Document is permitted without the written consent of McVac Mfg. Co. Inc.

700-067 Kit includes parts 14,15,16,17,18,19,20,and 23

#3 Crystal Holder
#4 Contact Spring
#5 SS Screw
#6 Thick Insulator
#7 Thin Insulator
#8 SS Nut
#9 SS Washer
#10 Lock Washer
#11 4-40 screw
#12 Back Cover Plate
#13 Sensor Body
#14 Connector Pin
#15 Pin Insulator
#16 SS Lock Washer
#17 Crystal Holder Spring
#18 Sensor Body
#19 Thick Insulator
#20 Thin Insulator
#21 SS Nut
#22 SS Washer
#23 Lock Washer
#24 4-40 screw

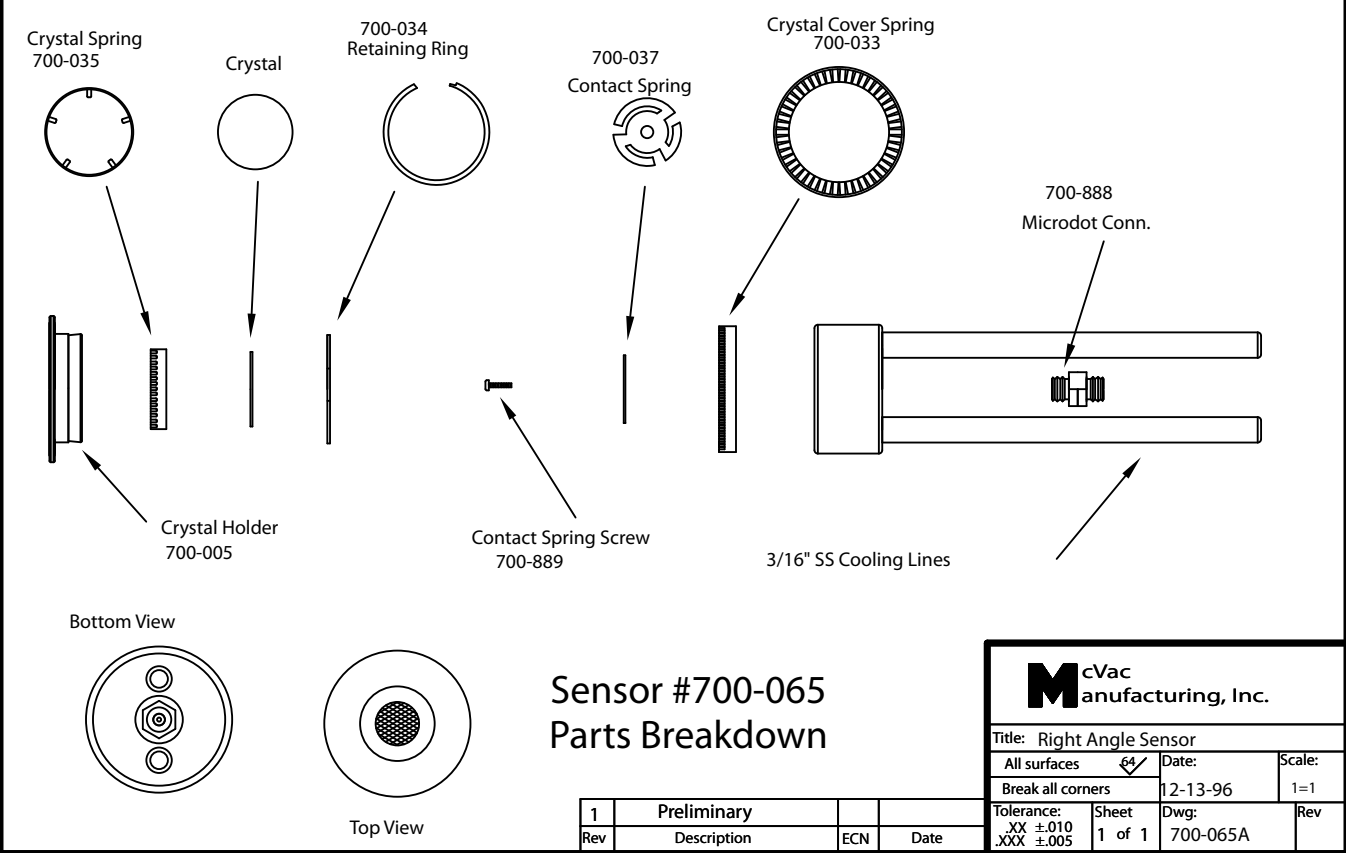
| 1 | Preliminary | | |
|-----|-------------|-----|------|
| Rev | Description | ECN | Date |
| | | | |

McVac
Manufacturing, Inc.

Title: Sensor exploded

| | | | |
|-------------------------|--------|--------|--------|
| All surfaces | ✓ | Date: | Scale: |
| Break all corners | | | |
| Tolerance: | Sheet | Dwg: | Rev |
| .XX ±.010 .XXX ±.005 | 1 of 1 | Sensor | |

This Drawing and the Knowledge and Information contained herein, is the Exclusive Property of McVac Mfg. Co. Inc. It is furnished with the understanding that the information contained is Confidential and Proprietary, and should be treated as such. No Unauthorized reproduction of this Document is permitted without the written consent of McVac Mfg. Co. Inc.



This Drawing and the Knowledge and Information contained herein, is the Exclusive Property of McVac Mfg. Co. Inc. It is furnished with the understanding that the information contained is Confidential and Proprietary, and should be treated as such. No Unauthorized reproduction of this Document is permitted without the written consent of McVac Mfg. Co. Inc.

