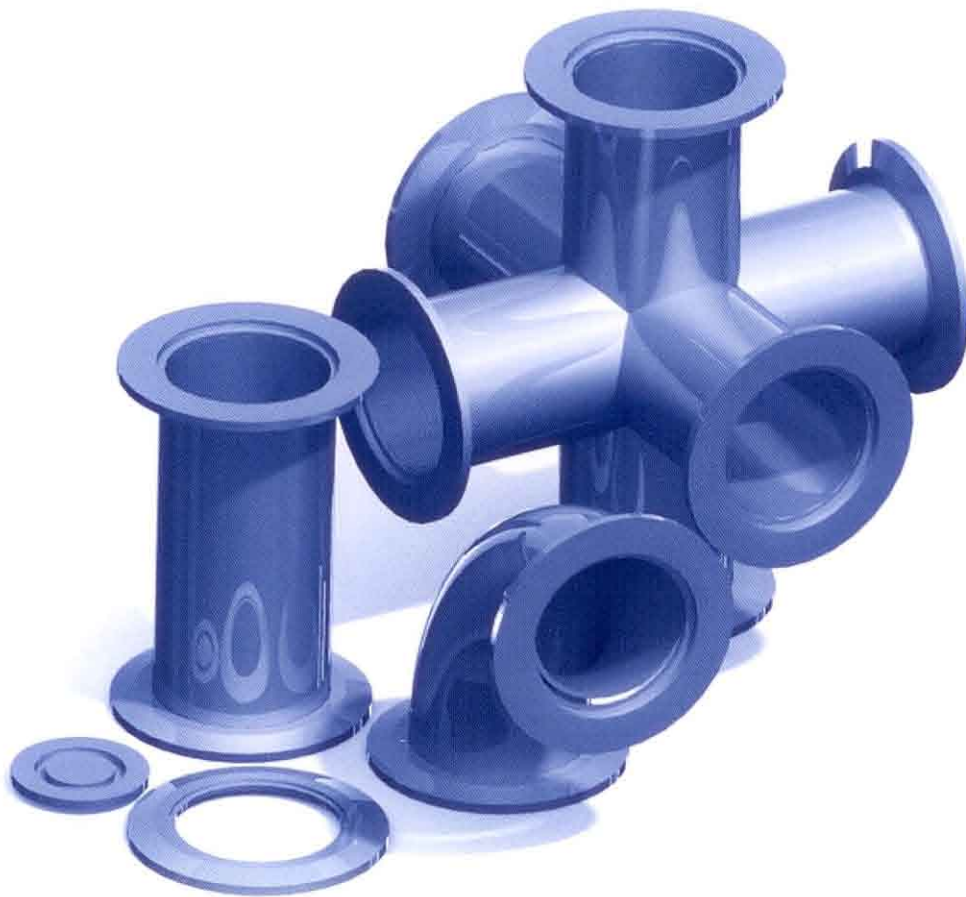


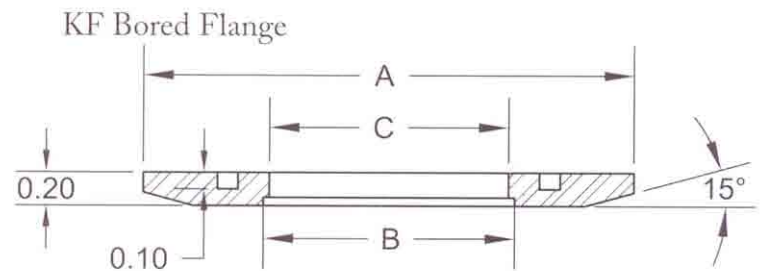
KF FLANGES and FITTINGS



MCVAC MANUFACTURING CO. INC. PHONE: (315) 432-9257

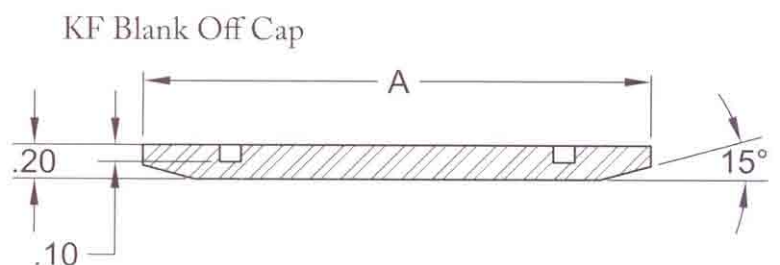
KF BORED FLANGES

PART NO.	TUBE OD (IN.)	A INCHES	B INCHES	C INCHES
KF-10B-038	3/8	1.180	0.326	0.380
KF-10B-050	1/2	1.180	0.451	0.510
KF-16B-038	3/8	1.180	0.326	0.380
KF-16B-050	1/2	1.180	0.451	0.510
KF-16B-075	3/4	1.180	0.680	0.760
KF-25B-038	3/8	1.575	0.326	0.380
KF-25B-050	1/2	1.575	0.451	0.510
KF-25B-075	3/4	1.575	0.715	0.760
KF-25B-100	1	1.575	0.938	1.010
KF-40B-038	3/8	2.160	0.326	0.380
KF-40B-050	1/2	2.160	0.451	0.510
KF-40B-075	3/4	2.160	0.715	0.760
KF-40B-100	1	2.160	0.938	1.010
KF-40B-150	1 1/2	2.160	1.438	1.510
KF-50B-038	3/8	2.950	0.326	0.380
KF-50B-050	1/2	2.950	0.451	0.510
KF-50B-075	3/4	2.950	0.715	0.760
KF-50B-100	1	2.950	0.938	1.010
KF-50B-150	1 1/2	2.950	1.438	1.510
KF-50B-200	2	2.950	1.938	2.010



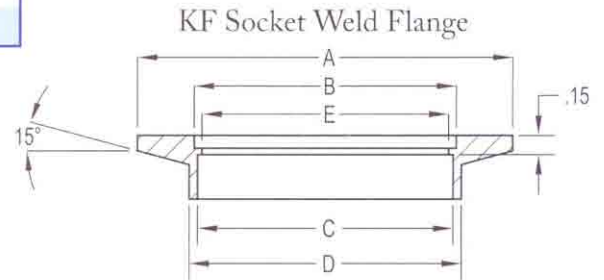
KF BLANK OFF CAPS

PART NO.	A INCHES
KF-10BL	1.180
KF-16BL	1.180
KF-25BL	1.575
KF-40BL	2.160
KF-50BL	2.950



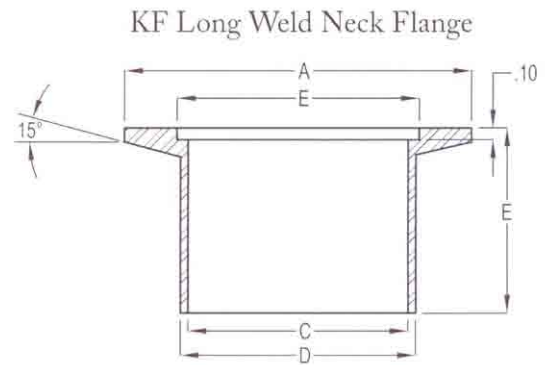
KF SOCKET WELD FLANGES

PART NO.	TUBE OD (IN.)	A INCHES	B INCHES	C INCHES	D INCHES	E INCHES
KF-10-SW	½	1.180	0.480	0.510	0.640	-
KF-16-SW	¾	1.180	0.680	0.760	0.798	-
KF-25-SW	1	1.575	1.031	1.010	1.140	0.938
KF-40-SW	1½	2.160	1.620	1.510	1.640	1.438
KF-50-SW	2	2.950	2.060	2.010	2.140	1.938



KF LONG WELD NECK FLANGES

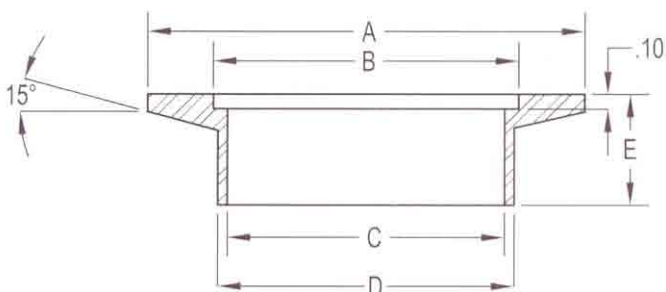
Part No.	A INCHES	B INCHES	C INCHES	D INCHES
KF-10-FL	1.180	0.480	0.380	½
KF-16-FL	1.180	0.680	0.625	¾
KF-25-FL	1.575	1.031	0.870	1
KF-40-FL	2.160	1.620	1.370	1½
KF-50-FL	2.950	2.060	1.870	2



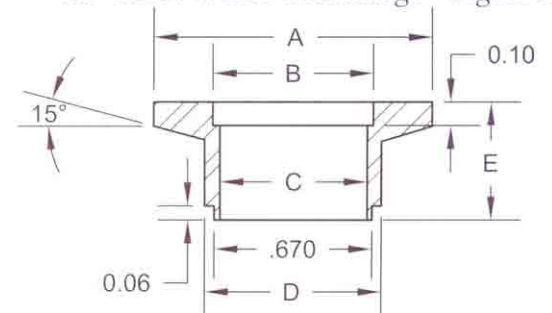
KF SHORT WELD NECK FLANGES

Part No.	Figure	TUBE OD (IN.)	A INCHES	B INCHES	C INCHES	D INCHES	E INCHES
KF10-F	1	½	1.180	0.480	0.380	½	0.500
KF-16-F	2	¾	1.180	0.680	0.625	¾	0.560
KF-16-FB	1	¾	1.180	0.680	0.625	¾	0.500
KF-25-F	1	1	1.575	1.031	0.870	1	0.500
KF-40-F	1	1½	2.160	1.620	1.370	1½	0.750
KF-50-F	1	2	2.950	2.060	1.870	2	0.750

KF Short Weld Neck Flange - Figure 1



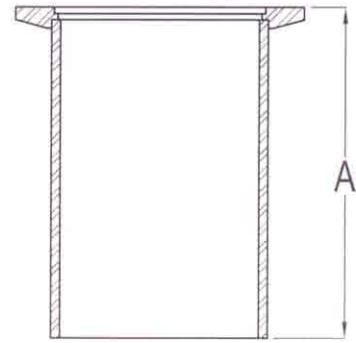
KF Short Weld Neck Flange - Figure 2



KF HALF NIPPLES

Part No.	TUBE OD (IN.)	A INCHES
KF-10B-HN	½	1.25
KF-16B-HN	¾	1.15
KF-25B-HN	1	2.03
KF-40B-HN	1½	2.40
KF-50B-HN	2	3.15

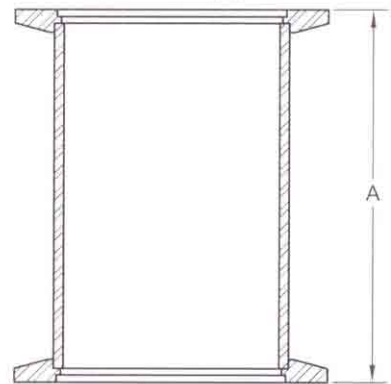
KF Half Nipple



KF FULL NIPPLES

Part No.	TUBE OD (IN.)	A INCHES
KF-10B-FN	½	2.50
KF-16B-FN	¾	2.30
KF-25B-FN	1	4.06
KF-40B-FN	1½	4.80
KF-50B-FN	2	6.30

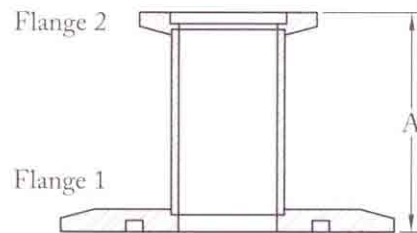
KF Full Nipple



KF REDUCER NIPPLES

Part No.	Flange 1	Flange 2	TUBE OD (IN.)	A INCHES
KF-16-10-RN	KF-16	KF-10	½	1.40
KF-25-10-RN	KF-25	KF-10	½	1.40
KF-25-16-RN	KF-25	KF-16	¾	1.30
KF-40-10-RN	KF-40	KF-10	½	1.40
KF-40-16-RN	KF-40	KF-16	¾	1.30
KF-40-25-RN	KF-40	KF-25	1	2.18
KF-50-10-RN	KF-50	KF-10	½	1.40
KF-50-16-RN	KF-50	KF-16	¾	1.30
KF-50-25-RN	KF-50	KF-25	1	2.18
KF-50-40-RN	KF-50	KF-40	1½	2.55

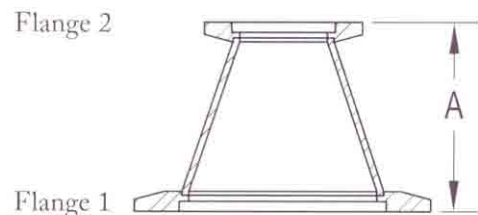
KF Reducer Nipple



KF CONICAL REDUCER NIPPLES

Part No.	Flange 1	Flange 2	A INCHES
KF-25-16-CR	KF-25	KF-16	0.620
KF-40-16-CR	KF-40	KF-16	0.620
KF-50-16-CR	KF-50	KF-16	0.620
KF-40-25-CR	KF-40	KF-25	0.870
KF-50-25-CR	KF-50	KF-25	0.870
KF-50-40-CR	KF-50	KF-40	1.380

KF Conical Reducer

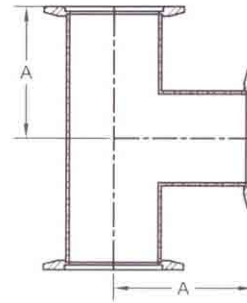


KF Fittings

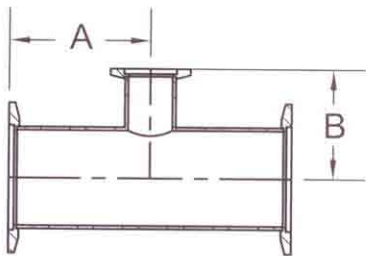
KF TEES

Part No.	TUBE OD (IN.)	A INCHES
KF-10B-T	½	1.25
KF-16B-T	¾	1.15
KF-25B-T	1	2.03
KF-40B-T	1½	2.40
KF-40S-T	1½	2.56
KF-50B-T	2	3.15
KF-50S-T	2	2.76

KF Tee



KF Reducer Tee



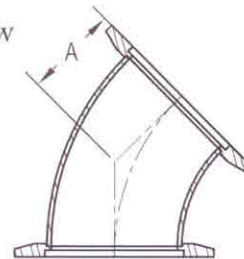
KF REDUCER TEES

Part No.	Tube 1 OD (IN.)	Tube 2 OD (IN.)	A INCHES	B INCHES
KF-25-16B-RTE	1	¾	2.03	1.27
KF-40-16B-RTE	1½	¾	2.40	1.53
KF-40-25B-RTE	1½	1	2.40	2.28
KF-50-16B-RTE	2	¾	3.15	1.78
KF-50-40B-RTE	2	1½	3.15	2.65

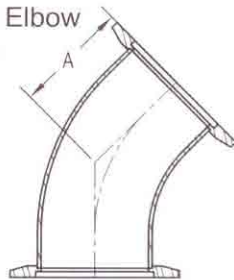
KF 45° RADIUS ELBOWS

Part No.	TUBE OD (IN.)	A INCHES
KF-25-RL45	1	0.77
KF-40-RL45	1½	1.08
KF-50-RL45	2	1.39

KF 45° Radius Elbow



KF 45° Radius Elbow With Tangents



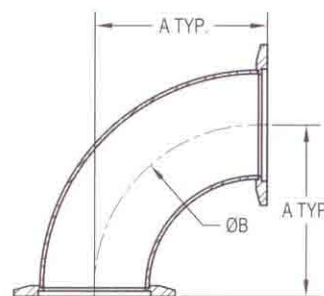
KF 45° RADIUS ELBOWS with TANGENTS

Part No.	TUBE OD (IN.)	A INCHES
KF-16-RL45-T	¾	0.91
KF-25-RL45-T	1	1.12
KF-40-RL45-T	1½	1.68
KF-50-RL45-T	2	1.99

KF 90° RADIUS ELBOWS

Part No.	TUBE OD (IN.)	A INCHES	B INCHES
KF-10B-RL90	½	1.25	0.75
KF-16B-RL90	¾	1.15	1.00
KF-25B-RL90	1	1.65	1.50
KF-40B-RL90	1½	2.40	2.25
KF-40S-RL90	1½	2.56	2.25
KF-40S-RL90L	1½	5.12	2.25
KF-50B-RL90	2	3.15	3.00
KF-50S-RL90L	2	5.51	3.00

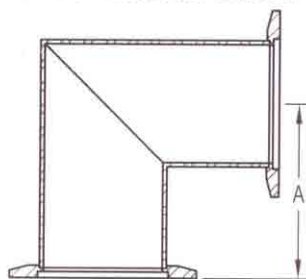
KF 90° Radius Elbow



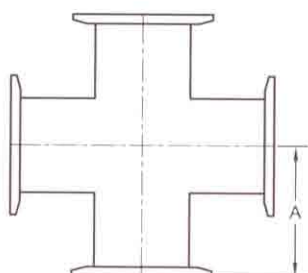
KF 90° MITERED ELBOWS

Part No.	TUBE OD (IN.)	A INCHES
KF-16B-ML90	¾	1.15
KF-25B-ML90	1	2.03
KF-40B-ML90	1½	2.40
KF-40S-ML90	1½	2.56
KF-50B-ML90	2	3.15
KF-50S-ML90	2	2.76

KF 90° Mitered Elbow



KF 4-Way Cross



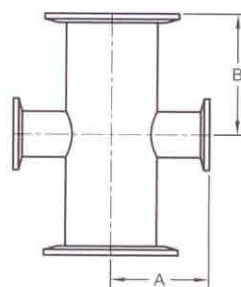
KF 4-WAY CROSSES

Part No.	TUBE OD (IN.)	A INCHES
KF-10B-X4	½	1.25
KF-16B-X4	¾	1.15
KF-25B-X4	1	2.03
KF-40B-X4	1½	2.40
KF-40S-X4	1½	2.56
KF-50B-X4	2	3.15
KF-50S-X4	2	2.76

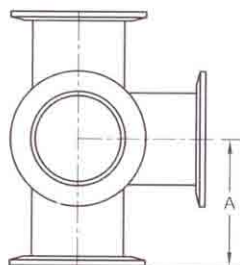
KF 4-WAY REDUCER CROSSES

Part No.	Tube 1 OD (IN.)	Tube 2 OD (IN.)	A INCHES	B INCHES
KF-25-16B-RDX	1	¾	2.03	1.27
KF-40-16B-RDX	1½	¾	2.40	1.53
KF-40-25B-RDX	1½	1	2.40	2.28
KF-50-16B-RDX	2	¾	3.15	1.78
KF-50-40B-RDX	2	1½	3.15	2.65

KF Reducer Cross



KF 5-Way Cross



KF 5-WAY CROSSES

Part No.	TUBE OD (IN.)	A INCHES
KF-16B-X5	¾	1.50
KF-25B-X5	1	2.03
KF-40B-X5	1½	2.40
KF-50B-X5	2	3.15

KF 6-WAY CROSSES

Part No.	TUBE OD (IN.)	A INCHES
KF-16B-X6	¾	1.50
KF-25B-X6	1	2.03
KF-40B-X6	1½	2.40
KF-50B-X6	2	3.15

KF 6-Way Cross

