

# **ASA FLANGES and FITTINGS**

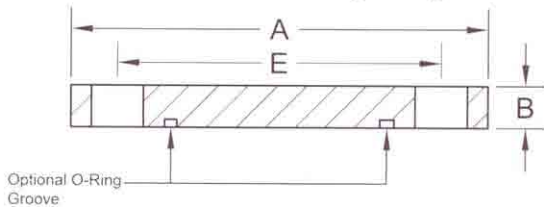


**MCVAC MANUFACTURING CO. INC.    PHONE: (315) 432-9257**

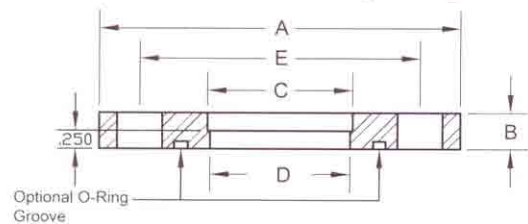
## SIZE 5 INCH TO 9 INCH ASA FLANGES, NON-ROTATABLE

Part No.	Figure	A INCHES	B INCHES	C INCHES	D INCHES	E INCHES	Bolt Holes	Bolt Diameter
ASA-5-000-N	1	5.00	0.500	Blank	Blank	3.880	4	0.625
ASA-5-200-N	3	5.00	0.500	2.010	1.938	3.880	4	0.625
ASA-5-250-N	3	5.00	0.500	2.510	2.438	3.880	4	0.625
ASA-6-000-N	1	6.00	0.500	Blank	Blank	4.750	4	0.750
ASA-6-300-N	3	6.00	0.500	3.010	2.938	4.750	4	0.750
ASA-6-350-N	3	6.00	0.500	3.510	3.438	4.750	4	0.750
ASA-7.5-000-N	1	7.50	0.500	Blank	Blank	6.000	4	0.750
ASA-7.5-400-N	3	7.50	0.500	4.010	3.910	6.000	4	0.750
ASA-9-000-N	1	9.00	0.500	Blank	Blank	7.500	8	0.750
ASA-9-400-N	3	9.00	0.500	4.010	3.910	7.500	8	0.750
ASA-9-600-N	3	9.00	0.500	6.020	5.875	7.500	8	0.750

ASA Non-Rotatable Flange - Figure 1



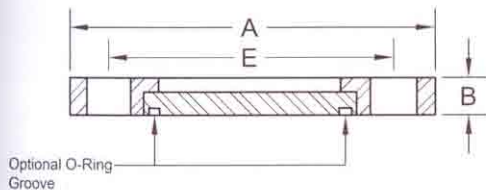
ASA Non-Rotatable Flange - Figure 3



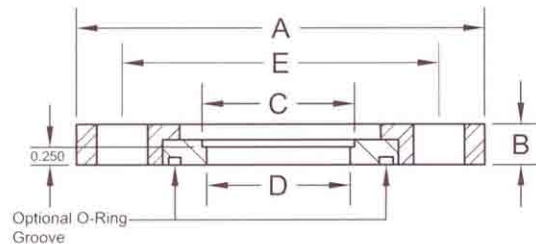
## SIZE 5 INCH TO 9 INCH ASA FLANGES, ROTATABLE

Part No.	Figure	A INCHES	B INCHES	C INCHES	D INCHES	E INCHES	Bolt Holes	Bolt Diameter
ASA-5-000-R	2	5.00	0.500	Blank	Blank	3.880	4	0.625
ASA-5-200-R	4	5.00	0.500	2.010	1.938	3.880	4	0.625
ASA-5-250-R	4	5.00	0.500	2.510	2.438	3.880	4	0.625
ASA-6-000-R	2	6.00	0.612	Blank	Blank	4.750	4	0.750
ASA-6-300-R	4	6.00	0.612	3.010	2.938	4.750	4	0.750
ASA-6-350-R	4	6.00	0.612	3.510	3.438	4.750	4	0.750
ASA-7.5-000-R	2	7.50	0.612	Blank	Blank	6.000	4	0.750
ASA-7.5-400-R	4	7.50	0.612	4.010	3.910	6.000	4	0.750
ASA-9-000-R	2	9.00	0.612	Blank	Blank	7.500	8	0.750
ASA-9-400-R	4	9.00	0.612	4.010	3.910	7.500	8	0.750
ASA-9-600-R	4	9.00	0.612	6.020	5.875	7.500	8	0.750

ASA Rotatable Flange - Figure 2



ASA Rotatable Flange - Figure 4

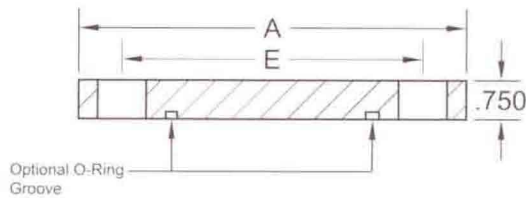


# ASA Flanges

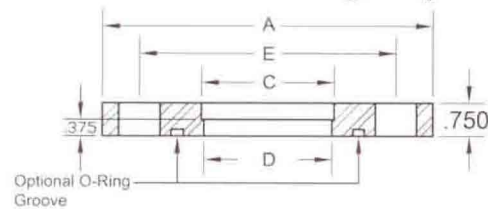
## SIZE 11 INCH TO 16 INCH ASA FLANGES, NON-ROTATABLE

Part No.	Figure	A INCHES	C INCHES	D INCHES	E INCHES	Bolt Holes	Bolt Diameter
ASA-11-000-N	1	11.00	Blank	Blank	9.500	8	0.812
ASA-11-600-N	3	11.00	6.020	5.875	9.500	8	0.812
ASA-11-800-N	3	11.00	8.020	7.875	9.500	8	0.812
ASA-13.5-000-N	1	13.50	Blank	Blank	11.750	8	0.812
ASA-13.5-800-N	3	13.50	8.020	7.875	11.750	8	0.812
ASA-13.5-1000-N	3	13.50	10.030	9.875	11.750	8	0.812
ASA-16-000-N	1	16.00	Blank	Blank	14.250	12	0.812
ASA-16-1000-N	3	16.00	10.030	9.875	14.250	12	0.812
ASA-16-1200-N	3	16.00	12.030	11.875	14.250	12	0.812

ASA Non-Rotatable - Figure 1



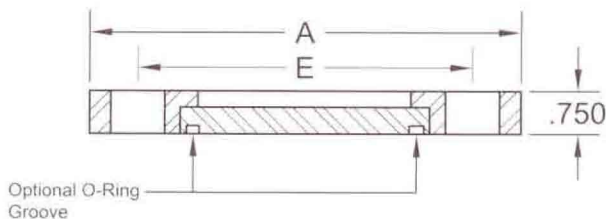
ASA Non-Rotatable Flange - Figure 3



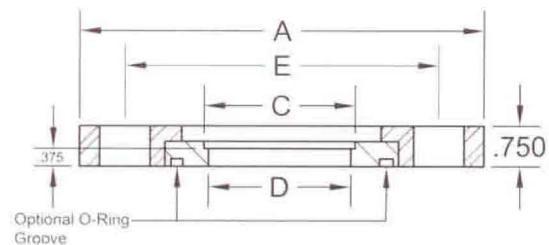
## SIZE 11 INCH TO 16 INCH ASA FLANGES, ROTATABLE

Part No.	Figure	A INCHES	C INCHES	D INCHES	E INCHES	Bolt Holes	Bolt Diameter
ASA-11-000-R	2	11.00	Blank	Blank	9.500	8	0.812
ASA-11-600-R	4	11.00	6.020	5.875	9.500	8	0.812
ASA-11-800-R	4	11.00	8.020	7.875	9.500	8	0.812
ASA-13.5-000-R	2	13.50	Blank	Blank	11.750	8	0.812
ASA-13.5-800-R	4	13.50	8.020	7.875	11.750	8	0.812
ASA-13.5-1000-R	4	13.50	10.030	9.875	11.750	8	0.812
ASA-16-000-R	2	16.00	Blank	Blank	14.250	12	0.812
ASA-16-1000-R	4	16.00	10.030	9.875	14.250	12	0.812
ASA-16-1200-R	4	16.00	12.030	11.875	14.250	12	0.812

ASA Rotatable Flange - Figure 2



ASA Rotatable Flange - Figure 4



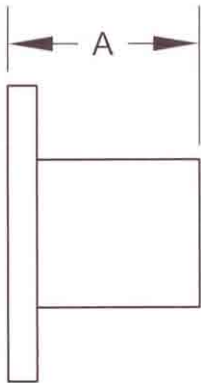
## ASA HALF NIPPLES

Part No.	FLANGE OD	TUBE OD (IN.)	A INCHES
ASA-5-200-HN	5.00	2	3.25
ASA-5-250-HN	5.00	2½	3.25
ASA-5-250-HNL	5.00	2½	4.00
ASA-6-300-HN	6.00	3	3.50
ASA-7.5-400-HN	7.50	4	4.13
ASA-7.5-400-HNL	7.50	4	5.12
ASA-9-400-HN	9.00	4	4.13
ASA-9-400-HNL	9.00	4	5.12
ASA-9-600-HN	9.00	6	5.25
ASA-9-600-HNL	9.00	6	6.31
ASA-11-600-HN	11.00	6	5.38
ASA-11-600-HNL	11.00	6	6.44
ASA-11-800-HN	11.00	8	7.38
ASA-13.5-800-HN	13.50	8	7.75
ASA-13.5-1000-HN	13.50	10	9.88
ASA-16-1000-HN	16.00	10	9.88
ASA-16-1200-HN	16.00	12	9.88

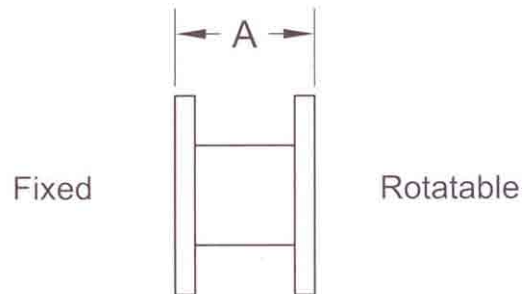
## ASA FULL NIPPLES

Part No.	FLANGE OD	TUBE OD (IN.)	A INCHES
ASA-5-200-FN	5.00	2	6.50
ASA-5-250-FN	5.00	2½	6.50
ASA-5-250-FNL	5.00	2½	8.00
ASA-6-300-FN	6.00	3	7.00
ASA-7.5-400-FN	7.50	4	8.26
ASA-7.5-400-FNL	7.50	4	10.24
ASA-9-400-FN	9.00	4	8.26
ASA-9-400-FNL	9.00	4	10.24
ASA-9-600-FN	9.00	6	10.50
ASA-9-600-FNL	9.00	6	12.62
ASA-11-600-FN	11.00	6	10.76
ASA-11-600-FNL	11.00	6	12.88
ASA-11-800-FN	11.00	8	14.76
ASA-13.5-800-FN	13.50	8	15.50
ASA-13.5-1000-FN	13.50	10	19.76
ASA-16-1000-FN	16.00	10	19.76
ASA-16-1200-FN	16.00	12	19.76

ASA Half Nipple

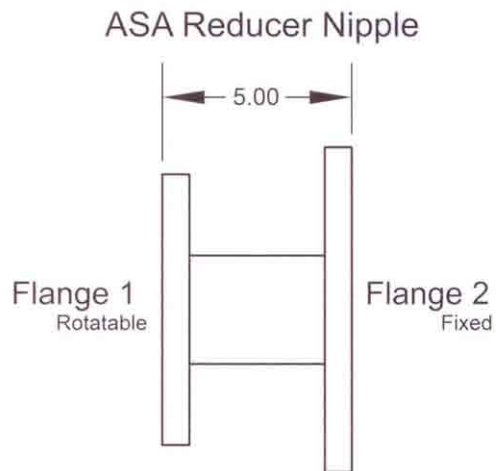


ASA Full Nipple



## ASA REDUCER NIPPLES

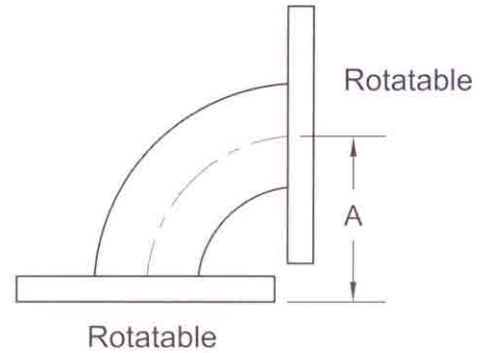
Part No.	Flange 1	Flange 2	TUBE OD (IN.)
ASA-9-5-RN	ASA-9	ASA-5	2
ASA-9-6-RN	ASA-9	ASA-6	3
ASA-9-7.5-RN	ASA-9	ASA-7.5	4
ASA-11-5-RN	ASA-11	ASA-5	2
ASA-11-6-RN	ASA-11	ASA-6	3
ASA-11-7.5-RN	ASA-11	ASA-7.5	4
ASA-11-9-RN	ASA-11	ASA-9	6
ASA-13.5-5-RN	ASA-13.5	ASA-5	2
ASA-13.5-6-RN	ASA-13.5	ASA-6	3
ASA-13.5-7.5-RN	ASA-13.5	ASA-7.5	4
ASA-13.5-9-RN	ASA-13.5	ASA-9	6
ASA-13.5-11-RN	ASA-13.5	ASA-11	8
ASA-16-5-RN	ASA-16	ASA-5	2
ASA-16-6-RN	ASA-16	ASA-6	3
ASA-16-7.5-RN	ASA-16	ASA-7.5	4
ASA-16-9-RN	ASA-16	ASA-9	6
ASA-16-11-RN	ASA-16	ASA-11	8
ASA-16-13.5-RN	ASA-16	ASA-13.5	10



## ASA 90° RADIUS ELBOWS

Part No.	FLANGE OD	TUBE OD (IN.)	A INCHES	B INCHES
ASA-5-RL90	5.00	2	3.25	3
ASA-6-RL90	6.00	3	4.75	4½
ASA-9-RL90	9.00	4	6.25	6
ASA-11-RL90	11.00	6	9.38	9
ASA-13.5-RL90	13.50	8	12.38	12
ASA-16-RL90	16.00	10	15.38	15

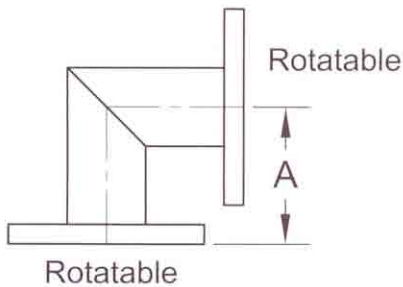
ASA 90° Radius Elbow



## ASA 90° MITERED ELBOWS

Part No.	FLANGE OD	TUBE OD (IN.)	A INCHES
ASA-5-200-ML90	5.00	2	3.25
ASA-5-250-ML90	5.00	2½	3.25
ASA-5-250-ML90L	5.00	2½	4.00
ASA-7.5-400-ML90L	7.50	4	5.12
ASA-9-400-ML90L	9.00	4	5.12
ASA-9-600-ML90	9.00	6	5.25
ASA-9-600-ML90L	9.00	6	6.31
ASA-11-600-ML90L	11.00	6	6.44
ASA-11-800-ML90	11.00	8	7.38
ASA-13.5-800-ML90	13.50	8	7.75
ASA-13.5-1000-ML90	13.50	10	9.88
ASA-16-1000-ML90	16.00	10	9.88

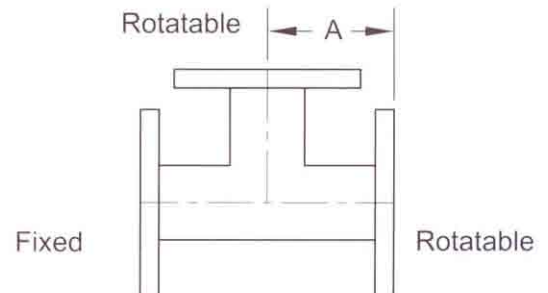
ASA 90° Mitered Elbow



## ASA TEES

Part No.	FLANGE OD	TUBE OD (IN.)	A INCHES
ASA-5-200-T	5.00	2	3.25
ASA-5-250-T	5.00	2½	3.25
ASA-5-250-TL	5.00	2½	4.00
ASA-7.5-400-TL	7.50	4	5.12
ASA-9-400-TL	9.00	4	5.12
ASA-9-600-T	9.00	6	5.25
ASA-9-600-TL	9.00	6	6.31
ASA-11-600-TL	11.00	6	6.44
ASA-11-800-T	11.00	8	7.38
ASA-13.5-800-T	13.50	8	7.75
ASA-13.5-1000-T	13.50	10	9.88
ASA-16-1000-T	16.00	10	9.88

ASA Tee

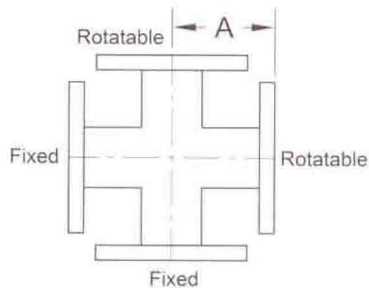


# ASA Fittings

## ASA 4-WAY CROSSES

Part No.	FLANGE OD	TUBE OD (IN.)	A INCHES
ASA-5-200-X4	5.00	2	3.25
ASA-5-250-X4	5.00	2½	3.25
ASA-5-250-X4L	5.00	2½	4.00
ASA-7.5-400-X4L	7.50	4	5.12
ASA-9-400-X4L	9.00	4	5.12
ASA-9-600-X4	9.00	6	5.25
ASA-9-600-X4L	9.00	6	6.31
ASA-11-600-X4L	11.00	6	6.44
ASA-11-800-X4	11.00	8	7.38
ASA-13.5-800-X4	13.50	8	7.75
ASA-13.5-1000-X4	13.50	10	9.88
ASA-16-1000-X4	16.00	10	9.88

ASA 4-Way Cross



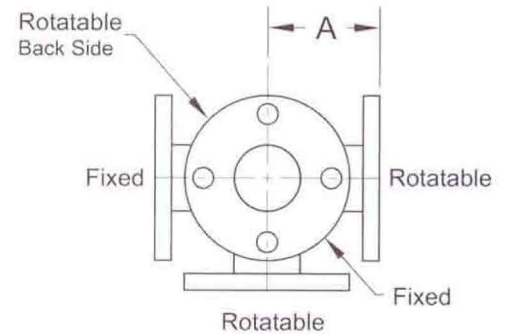
## ASA 6-WAY CROSSES

Part No.	FLANGE OD	TUBE OD (IN.)	A INCHES
ASA-5-200-X6	5.00	2	3.25
ASA-5-250-X6	5.00	2½	3.25
ASA-5-250-X6L	5.00	2½	4.00
ASA-7.5-400-X6L	7.50	4	5.12
ASA-9-400-X6L	9.00	4	5.12
ASA-9-600-X6	9.00	6	5.25
ASA-9-600-X6L	9.00	6	6.31
ASA-11-600-X6L	11.00	6	6.44
ASA-11-800-X6	11.00	8	7.38
ASA-13.5-800-X6	13.50	8	7.75
ASA-13.5-1000-X6	13.50	10	9.88
ASA-16-1000-X6	16.00	10	9.88

## ASA 5-WAY CROSSES

Part No.	FLANGE OD	TUBE OD (IN.)	A INCHES
ASA-5-200-X5	5.00	2	3.25
ASA-5-250-X5	5.00	2½	3.25
ASA-5-250-X5L	5.00	2½	4.00
ASA-7.5-400-X5L	7.50	4	5.12
ASA-9-400-X5L	9.00	4	5.12
ASA-9-600-X5	9.00	6	5.25
ASA-9-600-X5L	9.00	6	6.31
ASA-11-600-X5L	11.00	6	6.44
ASA-11-800-X5	11.00	8	7.38
ASA-13.5-800-X5	13.50	8	7.75
ASA-13.5-1000-X5	13.50	10	9.88
ASA-16-1000-X5	16.00	10	9.88

ASA 5-Way Cross



ASA 6-Way Cross

